



122R00_PLANAR-44G-12/24


1 / 10

CHAUFFAGE DE L'HABITACLE

REGLEMENT ECE 122R00

TYPE DE CHAUFFAGE:

ADVERS PLANAR-44G-12/24

	122R00_PLANAR-44G-12/24		2 / 10

SCHEMAS ET PHOTOS FOURNIS
DRAWINGS AND PHOTOGRAPHS SUPPLIED

Schéma ou photographie l'étiquette du constructeur:
Photograph or drawing of the manufacturer's label


Page 5

Schéma ou photographie du système de chauffage à combustion:
Photograph or drawing of the combustion heater

Page 6

Notice de montage du chauffage à combustion et de ses composants:
Mounting description of the combustion heater and all its components

Pages 7- 10

	122R00_PLANAR-44G-12/24		3 / 10

1. **GENERALITES**
GENERAL

1.1 Marque (raison sociale du constructeur): ADVERS
Make (trade name of manufacturer)

1.2 Type: PLANAR-44G
Type

CONFIGURATION 1 : PLANAR-44G-12/24

1.2.1 Dénomination(s) commerciale(s): PLANAR-44G-12
Commercial name(s) PLANAR-44G-24

1.3 Nom et adresse du constructeur: LLC «ADVERS»
Name and address of manufacturer 443068, Samara,
Novo-Sadovaja str. 106
Russia

1.4 Dans le cas d'éléments constitutifs, emplacement et méthode de fixation de la marque d'homologation ECE: Label on the heater
In the case of components, location and method of affixing of the ECE approval mark

1.5 Adresse des ateliers de montage: LLC «ADVERS»
Address(es) of assembly plant(s) 443068, Samara,
Novo-Sadovaja str. 106
Russia

LLC «ADVERS»
446253, Region Samara,
u.v. Bezenchuk,
Central str. 111, Russia



2. CHAUFFAGE A COMBUSTION COMBUSTION HEATER

- 2.1 Marque (raison sociale du constructeur): ADVERS
Make (trade name of manufacturer)
- 2.2 Type: PLANAR-44G-12/24
Type

CONFIGURATION 1 : PLANAR-44G-12/24

- 2.2.1 Dénomination(s) commerciale(s): PLANAR-44G-12
Commercial name(s) PLANAR-44G-24
- 2.3 Moyens d'identification du type, s'il est indiqu  sur le
syst me de chauffage: Label on the heater
*Means of identification of type, if marked on the
heating system*
- 2.4 Emplacement de cette marque: On the top of the heater
Location of that marking
- 2.5 Nom et adresse du constructeur: LLC «ADVERS»
Name and address of manufacturer 443068, Samara,
Novo-Sadovaja str. 106
Russia
- 2.6 Adresse des ateliers de montage: See 1.5
Address(es) of assembly plant(s)
- 2.7 Pression d' preuve: not applicable
Test pressure
- 2.7.1 Pression d' preuve de l'unit    basse pression: not applicable
Test pressure low-pressure unit
- 2.8 Description d taill e, plan de masse et notice de
montage du chauffage a combustion et de l'ensemble
de ses  l ments: Pages 7-10
*Detailed description, layout drawings and mounting
description of the combustion heater and all its components*
- Carburant Natural Gaz
Fuel CNG
- Fluide caloporteur Air
Transfer medium



122R00_PLANAR-44G-12/24

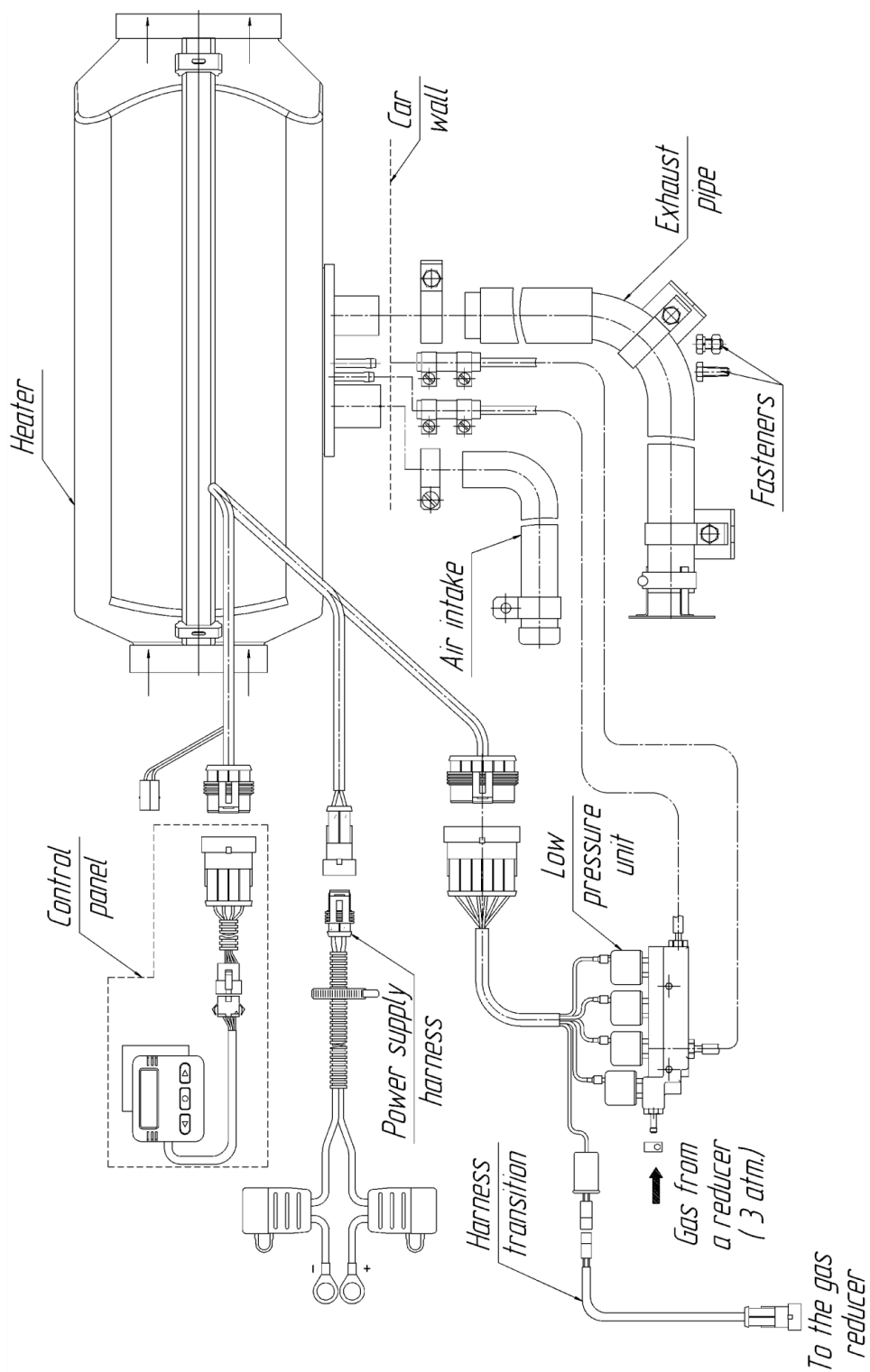
5 / 10

Photograph of the manufacturer's label





Drawing of the combustion heater





MOUNTING DESCRIPTION

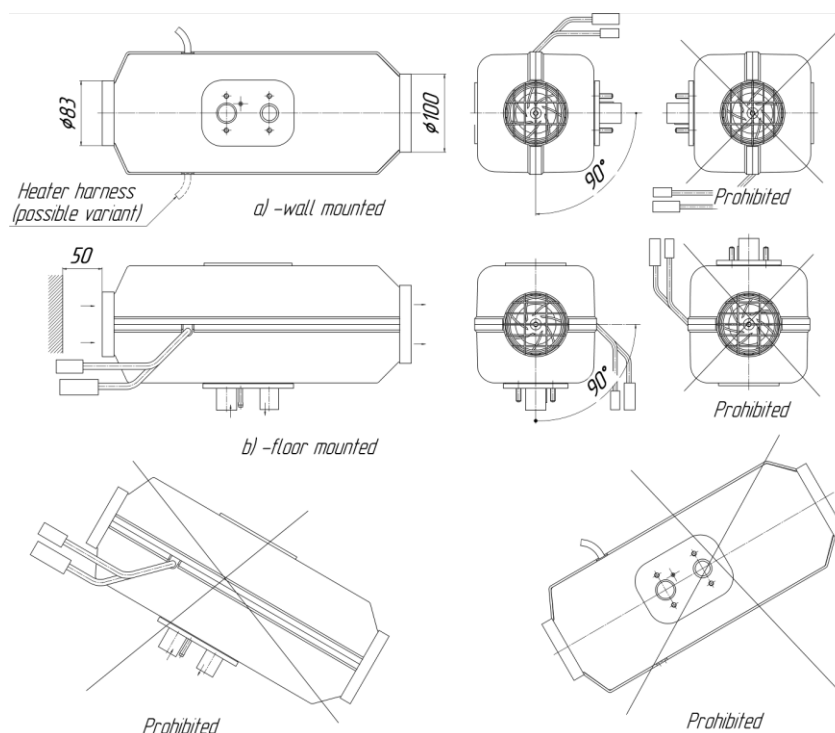
7. Installation Requirements

7.1 Heater Installation

Install the heater indoors while bearing in mind the permissible operating positions shown in Figure 7.1 and 7.1a. The figure 7.1 shows the two maximum assembly positions of the heater. Positioned the heater's inlet vent in such a way to prevent absorption of vehicle/heater exhaust gas in normal operating conditions. The gap between the walls/partitions and the edge of the inlet vent shall be at least 50 mm (see Figure 7.1). The distance between the walls/partitions and the edge of the outlet vent shall be at least 150mm. When assembling or operating the heater, ensure that no foreign objects enter the inlet/outlet vents. Prior to assembly, ensure availability of spare heating plug and bear in mind dismantlement requirements, as this will permit easier maintenance in future. At installation of the heater check that its case had no contact both with a floor and with other parts of a cabin or a manned compartment. See Figure 7.2 for how to position mounting holes to install the heater into the motor vehicle casing.

At installation to the heater of air ducts, they shouldn't have the deformations reducing the section through passage of an air duct. The maximum length of an output air duct shouldn't exceed 5 meters of total length.

ATTENTION !! Install the heater horizontally as shown in Figure 8.1.





At installation of the heater check that its case had no contact both with a floor and with other parts of a cabin or a manned compartment. Non-performance of this requirement can lead to deformation of the heater case, jamming of the air fan and a possible overheat.

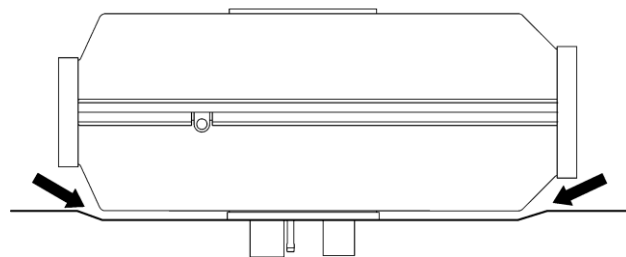


Fig. 7.1a - reserve free space

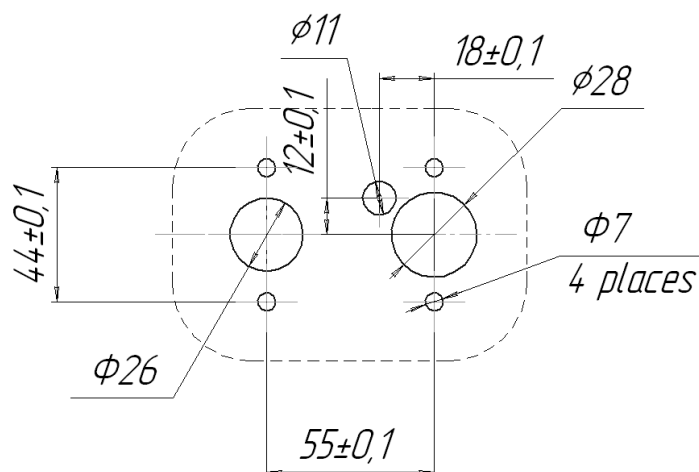


Figure 7.2– Mounting Holes Used for Heater Installation

7.2 Air Inlet Installation

Air necessary for burning, should not be soaked up from salon or a cabin and a car luggage space. Position the pipe's air inlet vent to prevent snow entering or choking the pipe and to allow incoming water to run off. The entrance aperture of an air inlet is forbidden to have against a running air stream at car movement.



7.3 Exhaust Pipe Installation

When installing the exhaust pipe, be mindful of its high operating temperature. Cut the exhaust pipe (a flexible corrugated metal hose) to size. Fix the exhaust pipe in place using clamps and position it at a slight angle following the trajectory of gas flow. To protect some parts of the vehicle (electric wiring and other harness) from high temperatures, there must be heat insulation installed.

To achieve a tight fit, prior to connecting the exhaust pipe to the heater pipe, make a saw-cut of about 15mm along the length of the exhaust pipe without going beyond the gripped part of the pipe. Ensure that the end of the exhaust pipe does not come into contact with the rubber seal of the heater. Direct exhaust gas outside. Position the gas outlet vent and the air inlet vent in such a way as to prevent exhaust gas from entering the combustion chamber. Ensure that exhaust gas does not enter the passenger compartment of the vehicle and that it does not get sucked in through the vehicle fan.

Do not allow exhaust gas to affect the performance of vehicle components. Position the exhaust pipe outlet vent so as to prevent snow entering or choking the pipe and to allow incoming water to run off. At the vent of the exhaust pipe the screen is installed, this necessary for stable operation of the heater while working low idle. If this screen is not installed, install it according fig.4.2

The exhaust outlet of an exhaust pipe is forbidden to have against a running air stream at car movement.


7.4 Installation of the low pressure unit.

The low pressure unit is recommended to have in a motor compartment in close proximity to the heater. To make installation of the block on a rigid surface, preferable situation - valves up.

7.5 Installation of Heater Electric Circuit

Heater wire harnesses shall be installed in compliance with the heater wiring system as shown in figure 4.1. When installing, do not allow the wire harnesses to become overheated, deformed or dislodged during vehicle use. Attach the harnesses to the vehicle fittings using plastic clamps.

Attention! Remove the fuse prior to installation

	122R00_PLANAR-44G-12/24		10 / 10

8. Post-installation Testing

8.1 When installing, ensure that:

- the fuel supply lines of the fuel supply system are leak-proof and all clamps are securely tightened
- the electric contacts of the harnesses and heater elements are securely installed,

8.2 Install fuse 25A .

8.3 Check that the heater is working :

- in ventilating mode,
- in heating mode.

The process of activation begins with purging of the combustion chamber. After purging the process of combustion begins and the heater goes on working in operation mode.

8.4 Deactivate the heater. While switching off the heater the gas stops entering and the process of ventilation of the combustion chamber and heat exchanger starts.

8.5 Activate the heater while the vehicle engine is running and ensure that the heater is operational.

ATTENTION! Remember that each time the heater fails to start at the first attempt, the heater will be restarted automatically by the control unit. If the heater is not activated after 2 attempts, there will be malfunction code on the Control panel (see tab 6.1).